

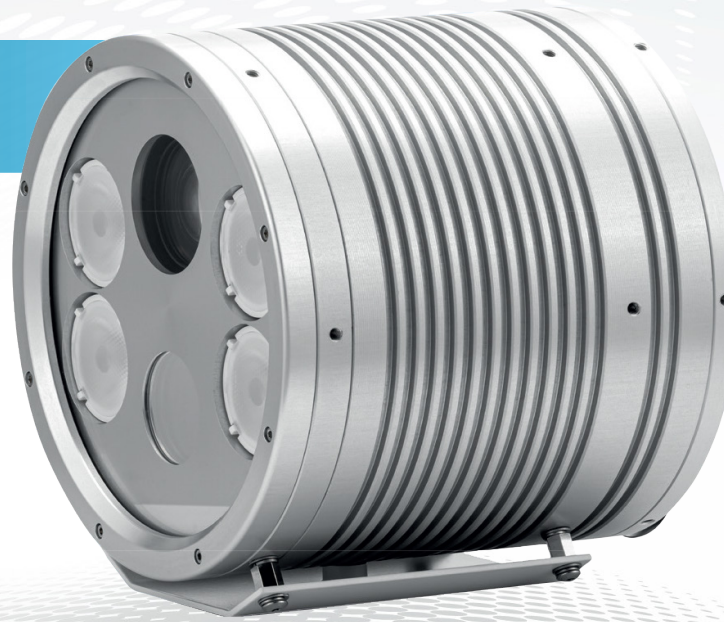
IQ:150

ALL-IN-ONE ANPR ZOOM CAMERAS WITH INTEGRAL ANPR RECOGNITION

MAV
ANPR TECHNOLOGY FOR
INTELLIGENT TRAFFIC SOLUTIONS

Single Lane Intelligent ANPR

Incorporating digital progressive scan image quality, motorized 20x zoom, high speed ANPR recognition and maxIRange™ pulsed IR lighting in one efficient unit, the IQ:150 single lane camera forms part of the IQ range to provide one lane or multi-lane capture.



Single Lane Intelligent ANPR

Choice of 12m, 8m or 4m lane width with maximum quality



Integrated ANPR Engine

To provide high accuracy reads with meta data



JSON Web Services

Simple integration into applications using open interface



Zoom Cameras

Fully controllable truEZoom™ for the perfect field of view



Powerful Pulsed IR

MaxIRange™ for true day/night number plate recognition



ECO Power / PoE+

Low power consumption, optionally powered from 802.3at PoE+



Easy Installation

Full setup using web browser with live video



Stand-alone

With optional sunshields and brackets for quick installation



Weather Proof

Fully hermetically sealed to IP68



Offline Data Management

Store and forward for offline data transfer (Optional)

IQ:150

ALL-IN-ONE ANPR ZOOM CAMERAS WITH INTEGRAL ANPR RECOGNITION

Single Lane Intelligent ANPR



Dual All-in-one Zoom Camera

The IQ:150 single lane camera provides recognition up to 4m lane width for detection of plates and is simple to set up with truEZoom™ for perfect field of view at distances from 3m up to 50m. Setup is performed using the camera's API or from any browser using the IQ's web setup with live video feed.

By performing the ANPR recognition within the camera network traffic is massively reduced. Real time recognition is performed on raw high definition images at full frame rate and will work for all traffic speeds from high speed highway gantry systems to access control.

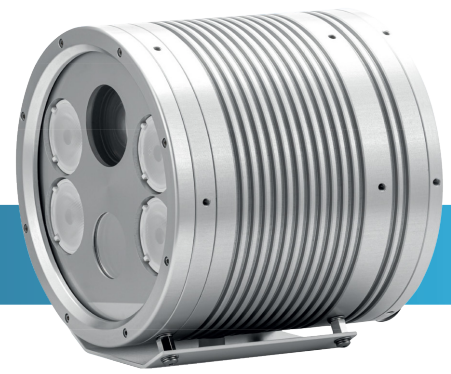
The IQ range incorporates high grade processing within the unit to give industry leading ANPR accuracy. Extensive metadata is provided for each plate read to offer application developers everything needed to determine plate characteristics, direction of travel and provide cropped overview and plate patch images. All this is available from the internal server using open standard JSON web services. A full HD multi-lane IQ is also available within MAV's range of Intelligent ANPR cameras.

The IQ:150 offers store and forward buffering whilst offline to ensure no data is lost. It provides up to one million cached reads or immediate data transfer via an API supporting JSON, FTP, UTM1.2 and Web Services. The IQ is hermetically sealed to IP68 and can be powered using PoE+ to give a single cable install.



IQ:150

ALL-IN-ONE ANPR ZOOM CAMERAS WITH INTEGRAL ANPR RECOGNITION



Technical Data

SPECIFICATIONS	IQ:150	IQ:250 SL
Recognition Range	Capture of up to 8m of traffic lanes from 3m to 50m based on 850nm IR on EU retro-reflective plates	Capture of up to 4m traffic lane(s) from 3m to 50m based on 850nm IR on EU retro-reflective plates
Motorised Zoom	Controllable 60° to 3° Horizontal Field of View Lens equivalent 4.5mm to 125mm	Controllable 54° to 2.5° Horizontal Field of View Lens equivalent 3.75mm to 83mm
Shutter / Iris	1/50 to 1/10,000 / F1.4 (wide) to F4.2 (tele)	1/50 to 1/10,000 / F1.6 (wide) to F3.6 (tele)
Image (ANPR and Overview)	Two HD cameras: 1280(H) x 720(V) effective pixels digitally connected to ANPR processor at 25 fps	Two SD cameras: 752(H) x 582(V) effective pixels digitally connected to ANPR processor at 25 fps
IR illumination	IR illumination 4 pulsed LED arrays with lenses (850nm standard. White light, 740nm or 940nm optional)	
Low Light	ANPR: 0.0 Lux with IR illumination OV: 0.1/0.006 Lux (Colour/B&W (no IR Cut) selectable)	
Optical Filters	IR: Bandpass matched to LEDs OV: Day/Night IR Cut Filter	
Camera Control	Integrated web server provides full camera and illuminator setup pages and live preview from any connected browser (no plug-ins required)	

ANPR ENGINE FUNCTIONALITY

ANPR Processor	Dual Core DSP with co-processor and two channel internal parallel video input
ANPR Software / Presets	ANPR license and configuration upload via web based configuration pages for simple remote management
ANPR Engine Protocol	JSON web services provide full access to overview and plate patch images and metadata as push or pull messages for easy integration into applications (O/S independent) and via web pages
ANPR Metadata	Multiple plate tracking with IDs, full availability of plate movement/size data through field of view
ANPR Features	Image cropping options for Overview image, advanced de-skew and yaw correction, character spacing validation, country of origin matching

PHYSICAL SPECIFICATIONS

Operating Voltage	10 – 15 VDC protected or PoE+ (802.3at)
Network Connections	10/100 Base-T physical
Power Consumption	Nominally 14W
Size (WxHxD)	163 x 163 x 145mm (cylindrical) excluding connectors, mount and sunshield
Weight	2.5kg excluding mount and sunshield
Enclosure	IP68 hermetically sealed. Hard anodized aluminium with mount options
Temperature / Humidity	-20° to 55°C ambient (Operating) / 0% - 100% RH (sealed)

SERVICE

Customer Service	Friendly, helpful service for product ordering and repair returns
Technical Support	Comprehensive pre and post-sale technical support for full life of the product
Warranty	12 month warranty, extended warranties and factory repair/replacement programmes available
Long Term Supply	Complete support for the life of the product
Quality Management	MAV operate a quality management system complying with ISO 9001:2000
Training	Comprehensive product training programmes for customers